



STAR OF THE WEEK

Ng Jin Xuen of F1W is the star of this Online Week! He has shown lots of improvement in completing his task. He is participative in online classes. He continues to be creative in making his project work such as STEM and Moral. All the best!



NG JIN XUEN

Rafflesia School Newsletter
2020/Term2-OL Week 39&40



Dear Parents / Guardians,

We are into the 8th day of the Online Learning due to CMCO. I must congratulate the students, teachers and the parents / guardians fraternity for the constant monitoring and cooperation to ensure the smooth implementation of the OL lessons. This time around we are better prepared compared to OL 1.0. The daily attendance is well above 90% . Nevertheless, our fight against the Covid-19 pandemic to flatten the curve is certainly not over yet. As we are aware, we are now the front liners. **Do stay home and stay safe.**

SMRP Activities:-

- Mandarin - Mandarin B.I.N.G.O.
- Sejarah - Siapakah orang Iban?
- English Language - Group Work Presentation
- - Online Speaking Task
- Bahasa Melayu - Projek Pelancongan / Demam Denggi / Perpaduan

Quotable Quote:-

Tough times are like physical exercise, you may not like it while you are doing it but tomorrow you'll be stronger because of it.

Thank you for continuous and unwavering support.

Allen Yong Kuan Hon
Principal

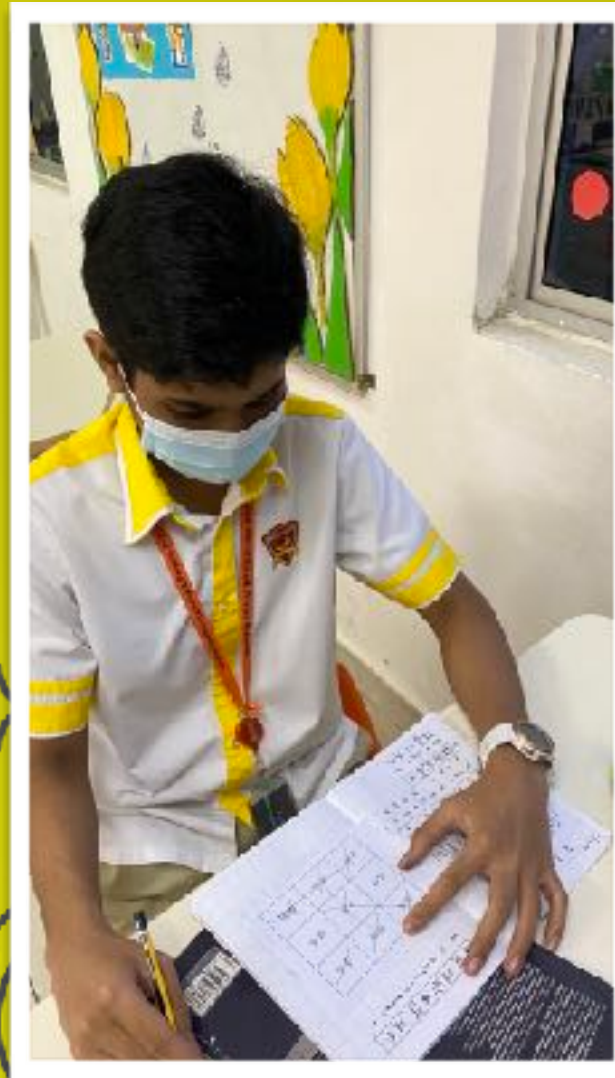


Rafflesia
INTERNATIONAL & PRIVATE SCHOOLS

MANDARIN LESSON

TRADITIONAL VALUES
GLOBAL VISION

**Mandarin
B.I.N.G.O**






Wong Kin Yui is presenting

Siapakah orang Iban?

- SALAH SATU RUMPUN AUSTRONESIA YANG TERDAPAT DI SARAWAK, KALIMANTAN BARAT, BRUNEI, SABAH DAN JOHOR.
- MENGIKUT SEJARAH LISAN, PEMBENTUKAN DAN PERKEMBANGAN BUDAYA SOSIAL KAUM IBAN KHASKYA ATAU ETHNIK AUSTRONESIA AMNYA.



Participants: You, Marcus Wan..., Wong Kin Yui, Chia Yan Xin, Victoria Man..., Lee Zi Jan

Wong Kin Yui is presenting

Pakaian Tradisoinal Iban

- PAKAIAN TRADISIONAL LELAKI IBAN TERBAHAGI KEPADA DUA IAITU KAIN SIRAT DAN DANDONG.
- KAIN SIRAT DIKENALI JUGA SEBAGAI KAIN CAWAT MERUPAKAN PAKAIAN ASAS KAUM IBAN. SIRAT DIPAKAI DENGAN CARA MELILITNYA DIPINGGANG DAN CELAH KELENGKANG.




Participants: You, Marcus Wan..., Wong Kin Yui, Chia Yan Xin, Victoria Man..., Lee Zi Jan

Wong Kin Yui is presenting

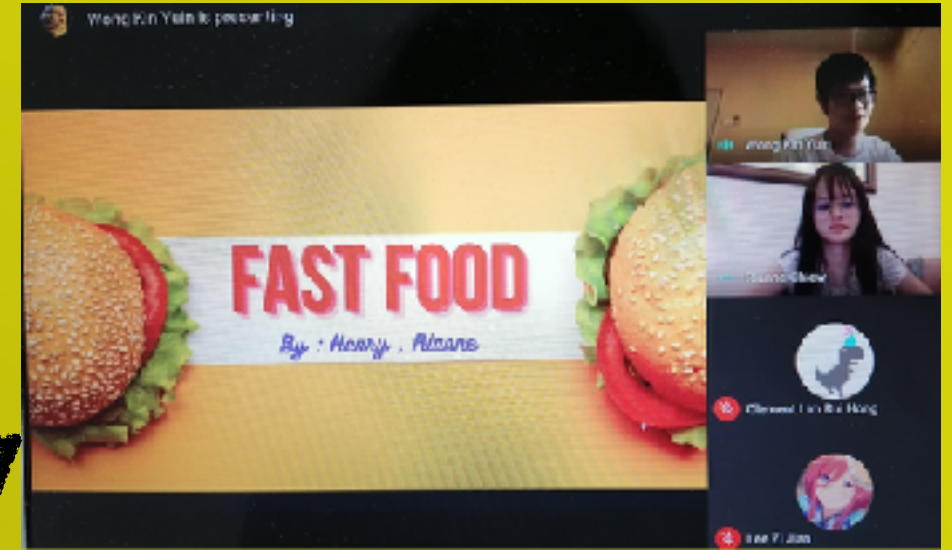
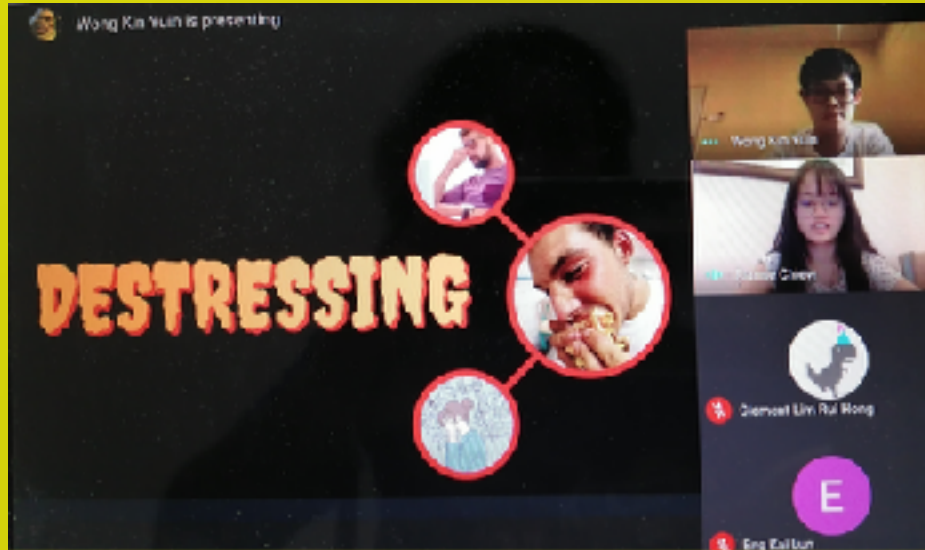
MAKANAN

- KASAM ADALAH DAGING, IKAN ATAU SAYUR-SAYURAN YANG DIAWETKAN.
- PANSOH ATAU LULUH ADALAH HIDANGAN NASI ATAU MAKANAN LAIN YANG DIMASAK DI BAHAGIAN BULUH

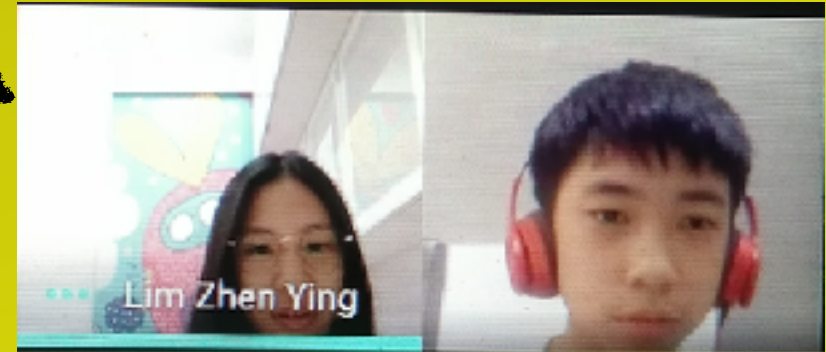
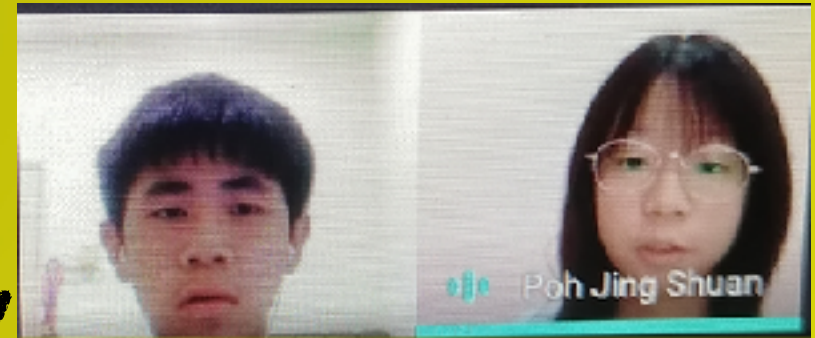


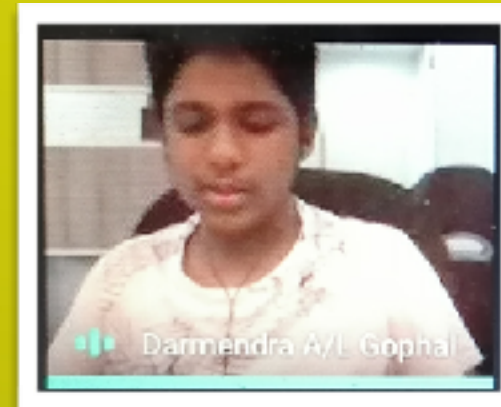
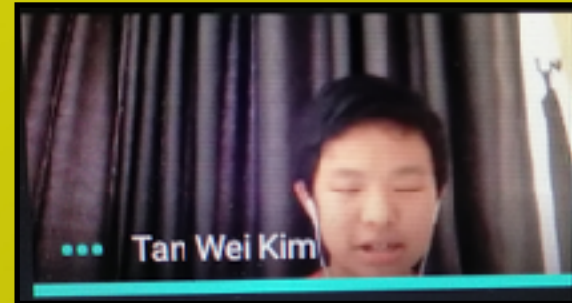
Participants: You, Marcus Wan..., Wong Kin Yui, Chia Yan Xin, Victoria Man..., Lee Zi Jan

*Online lesson
by Form 2
students*

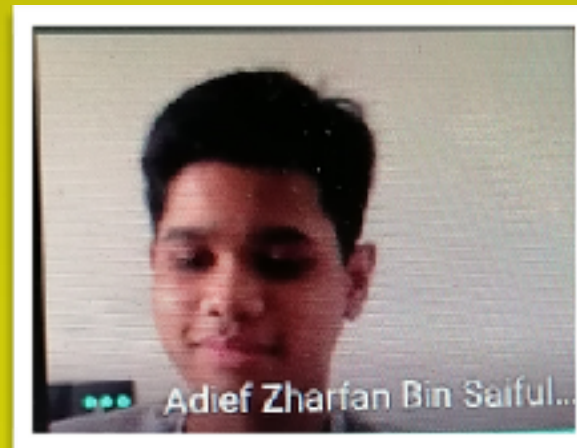
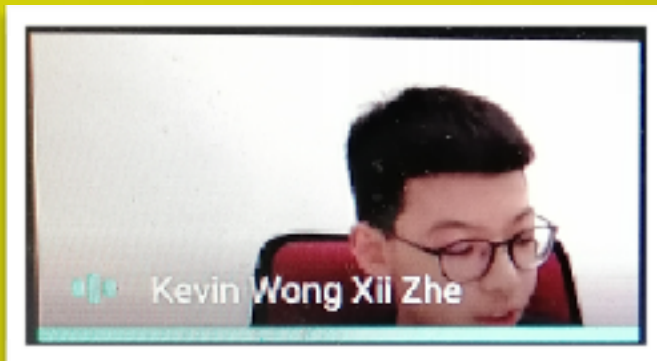


Form 2 students are doing their pair work presentation online..





**Online Speaking Task
-F1R & F1W students-**

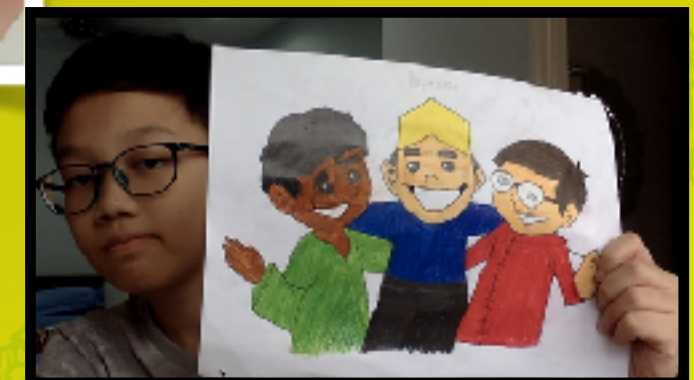
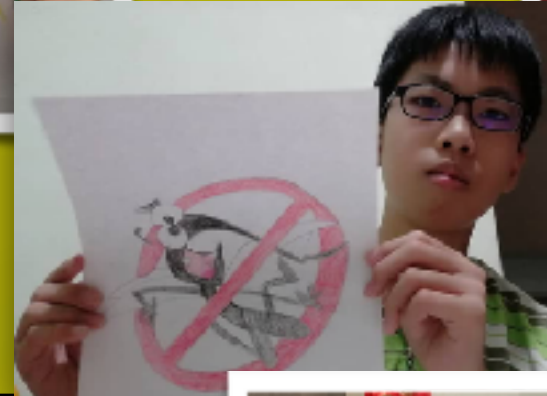




Rafflesia
INTERNATIONAL & PRIVATE SCHOOLS

BAHASA MELAYU

TRADITIONAL VALUES
GLOBAL VISION



Project Presentation based on 'Pelancongan/ Demam Denggi & perpaduan di Malaysia' -F1W students-



STOP
COVID-19



STAY
HOME
STAY
SAFE

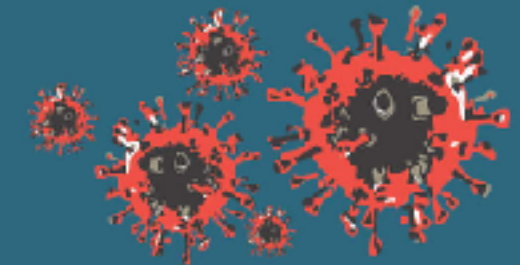


**STAY HOME
STAY SAFE**

NOVEL CORONAVIRUS (2019-nCoV)

WHAT IS THE NOVEL CORONAVIRUS (2019-nCoV)?

THE NOVEL CORONAVIRUS (2019-nCoV) IS A NEW STRAIN OF THE CORONAVIRUS THAT HAS NEVER BEEN PREVIOUSLY IDENTIFIED. BASED ON CURRENT AVAILABLE INFORMATION, HUMAN-TO-HUMAN TRANSMISSION OF 2019-nCoV IS VIA RESPIRATORY DROPLETS OR DIRECT CONTACT.



SYMPTOMS



SCAN ME



myhealthkkm



www.myhealth.gov.my

PREVENTIVE MEASURES

FOR TRAVELLERS,
ESPECIALLY TO CHINA AND
UPON RETURNING TO MALAYSIA

- Always practice good personal hygiene
 - Wash hands frequently with water and soap or hand sanitizer.
- During travel:
 - Always bring along face mask and hand sanitizer for use when required.
 - Avoid crowded places and close contact with people showing symptoms.
 - Avoid visiting animal farms, markets selling live animals, slaughterhouses or touching any animal.
 - Avoid eating raw or undercooked meat.

IMMEDIATELY SEEK MEDICAL ATTENTION IF YOU HAVE SYMPTOMS OF RESPIRATORY TRACT INFECTIONS SUCH AS FEVER, COUGH OR DIFFICULTY BREATHING WITHIN 14 DAYS AFTER RETURNING FROM THE VISIT.



Rafflesia
INTERNATIONAL & PRIVATE SCHOOLS

ANNOUNCEMENTS

TRADITIONAL VALUES
GLOBAL VISION

