



Rafflesia
INTERNATIONAL & PRIVATE SCHOOLS

Newsletter

Primary Star of the Week

Aqilah always has very positive energy and good motivation to learn. She is frequently the first for every lesson and has been completing her homework ahead of time. I believe Aqilah is continuing to improve upon her natural qualities and is really enjoying the challenge of being in year 4. Well done Aqilah!

Rafflesia International School, Kajang

STAR OF THE WEEK



Aqilah Umairah Binti Amir, Year 4

Term 1, Week 5, September 26th 2020



Rafflesia
INTERNATIONAL & PRIVATE SCHOOLS

Newsletter

Secondary Star of the Week

Zhen Yin is a well mannered girl who always actively participates in all class activities. She is also a helpful classmate who is willing to help out her peers whenever they are in need. She is an excellent group member who brings the best out of her partners, both personally and academically. Well done Zhen Yin!

TRADITIONAL VALUES • GLOBAL VISION

STAR OF THE WEEK



Kwan Zhen Yin, Year 7

Term 1, Week 5, September 26th 2020

Dear Parents/Guardians,

On Tuesday, our Community Police Officer, Sarjan Latfi, visited us again to conduct a routine inspection of our Covid-19 precautions. Sarjan Latfi visited several classrooms: Nursery, Year 3 and Year 11. He also examined our procedures for the flow of Secondary students in the cafeteria and our social distancing procedures. In his report, Sarjan Latfi recorded 100% compliance with the government SOP. We are mindful that there has been a swift increase in Covid-19 cases in Malaysia; it is therefore important that we all remain careful and consistent in maintaining safety precautions.

This week Mr Jeff and I have been conducting classroom observations to evaluate the quality of teaching and learning and the attitudes of students to their learning. Our recent professional development sessions have focused upon lesson design and literacy strategies. It has been excellent to observe well-structured lessons with an effective use of literacy strategies that have enabled students to articulate and explain their learning. A particularly strong feature of lessons has been the use of thinking skills activities. Indeed, in this newsletter you can read about activities from across the age range that involve inquiry-based, investigative learning and deep thinking.

Wishing you a happy, safe time with your families.

Andrew Crompton,
Principal.

PRIMARY PLANTING PROJECT

SEEDS OF LEARNING

This week, primary students started their first planting project for this school year. Students attended a planting workshop conducted by Mr Fareed and learned about the basics of planting such as the best times to water plants, needs of plants, and photosynthesis.

He talked about the days to maturity of different flowering plants and also demonstrated how soil is loosened to prepare for the planting of seeds. After that, students began planting flower seeds of their choice.



PRIMARY PLANTING PROJECT



PRIMARY PLANTING PROJECT



LEARNING OUTLINES

As part of the *This is Me* topic this week in our IEYC lessons, our young researchers have been analysing their heights and sizes and how are they different from their friends. We have created life size 'silhouettes' and we have started to make measurements and interesting comparisons. Catch up with us next week for the final outcome!



Year 1R & Year 2R

'CACTUS'

ART COMPOSITION



Climate for Learning

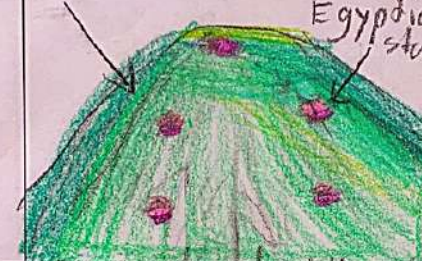

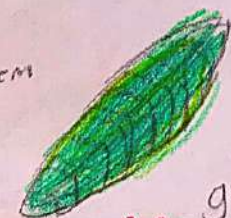





This week, Year 3 students used the Internet to gather geographical information about plants and compared and contrasted similarities and differences between plants that grow in cold countries and hot countries. The focus of this task was developing research skills as these young researchers found answers and evidence to questions about two different plants.

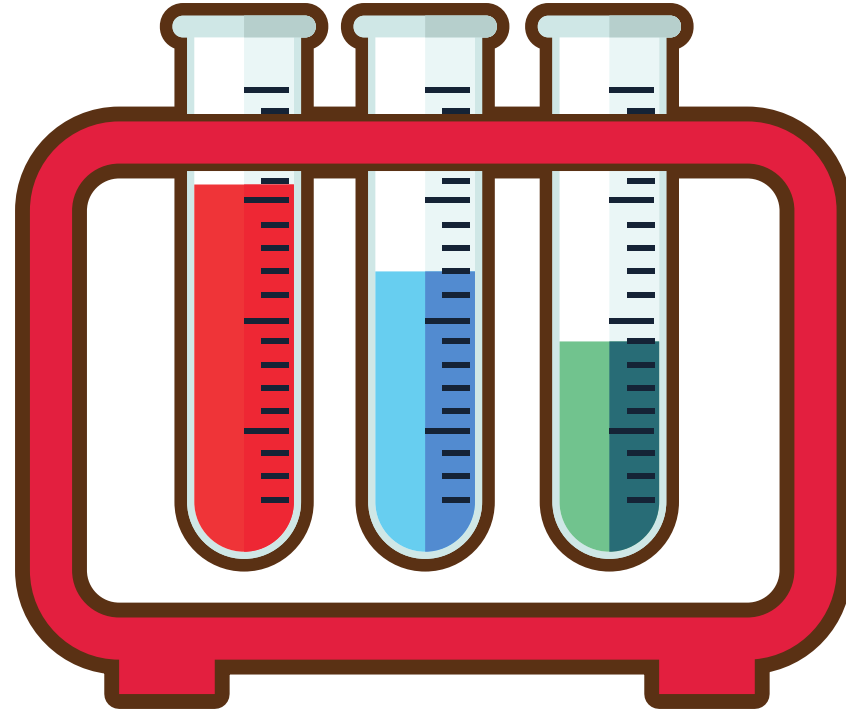
Name: Amanda Date: 1st October 2020

Geography Task 2: Comparing and Contrasting Plants

Theme: Let's Plant It!
 Subject: Geography
 Goals: 2.09 Be able to use secondary sources to obtain geographical information
 I can use the Internet to gather geographical information about plants. I can compare and contrast similarities and differences between a plant that grows in a cold country and one from a hot country.

	Plant 1 (Hot weather plant) Egyptian star flower	Plant 2 (Cold weather plant) Cone flower
Place of origin (country)	Africa, Yemen	Eastern North America
Overall appearance of plant	bush 	cone 
Colour of plant	pink, purple, red, white, yellow	purple, pink, red, yellow, white, can tubers, green, blue
Average height of plant	1-2' tall and wide	2-4 feet tall
Leaf (size, shape, color)	lance-shaped 15cm 	green Echinacea purpurea 
Flowers (if any) (color, size)	green 1-2' tall wide 	2-4 feet tall purple, pink, red, white 
Presence of hair, wax, etc.	Common robin red and pink. They attract butterflies and humming birds. Best flowering plant in full sun in well-drained soil.	hair cone flowers bloom from June to September. They attract bees and butterflies.

no vent jobs! oriented same.



Sensational Science

In our Science class my classmates and I did an experiment to find if there is starch, sugar or fats in a food we chose. The experiment was great fun and we got to see how different chemicals make food different colours. *Chee Kee Sia, Year 8.*



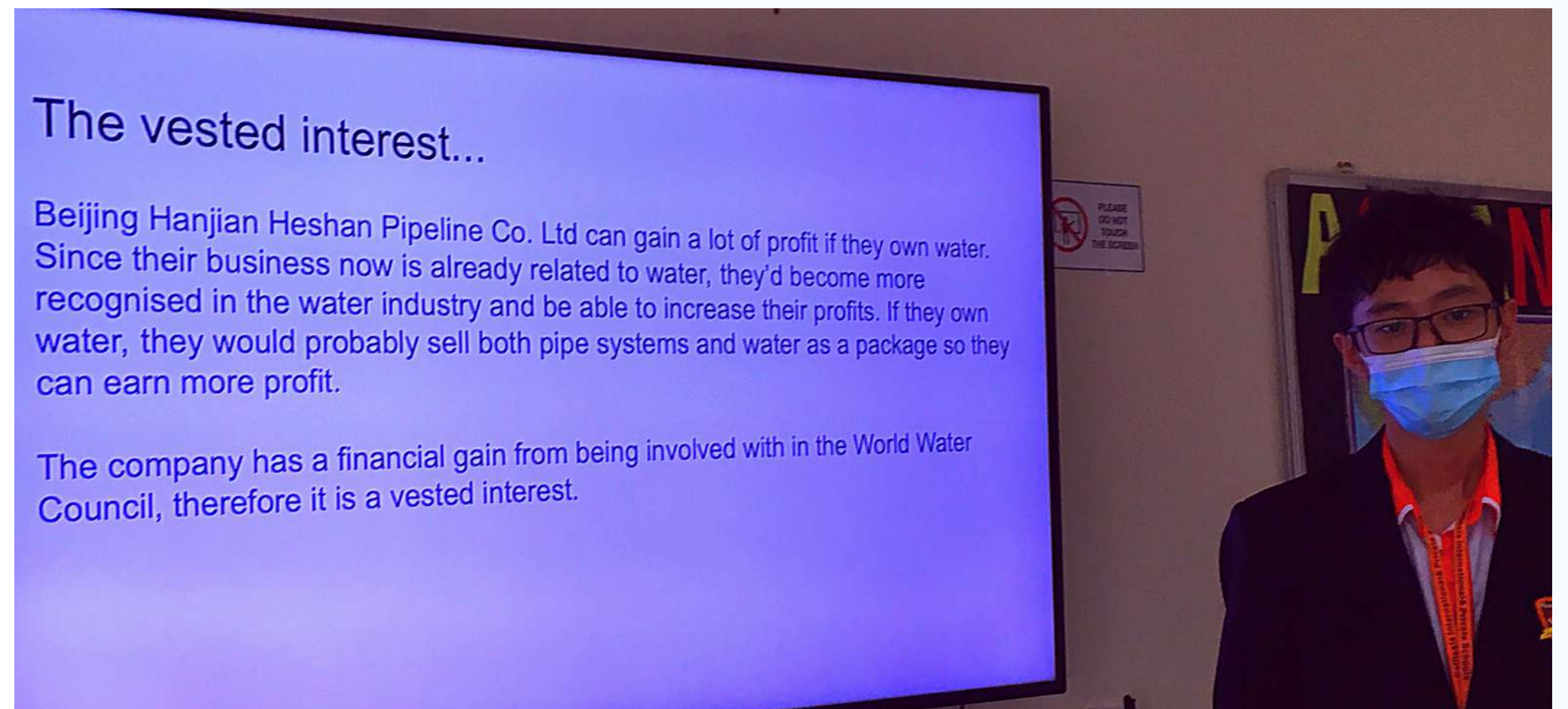
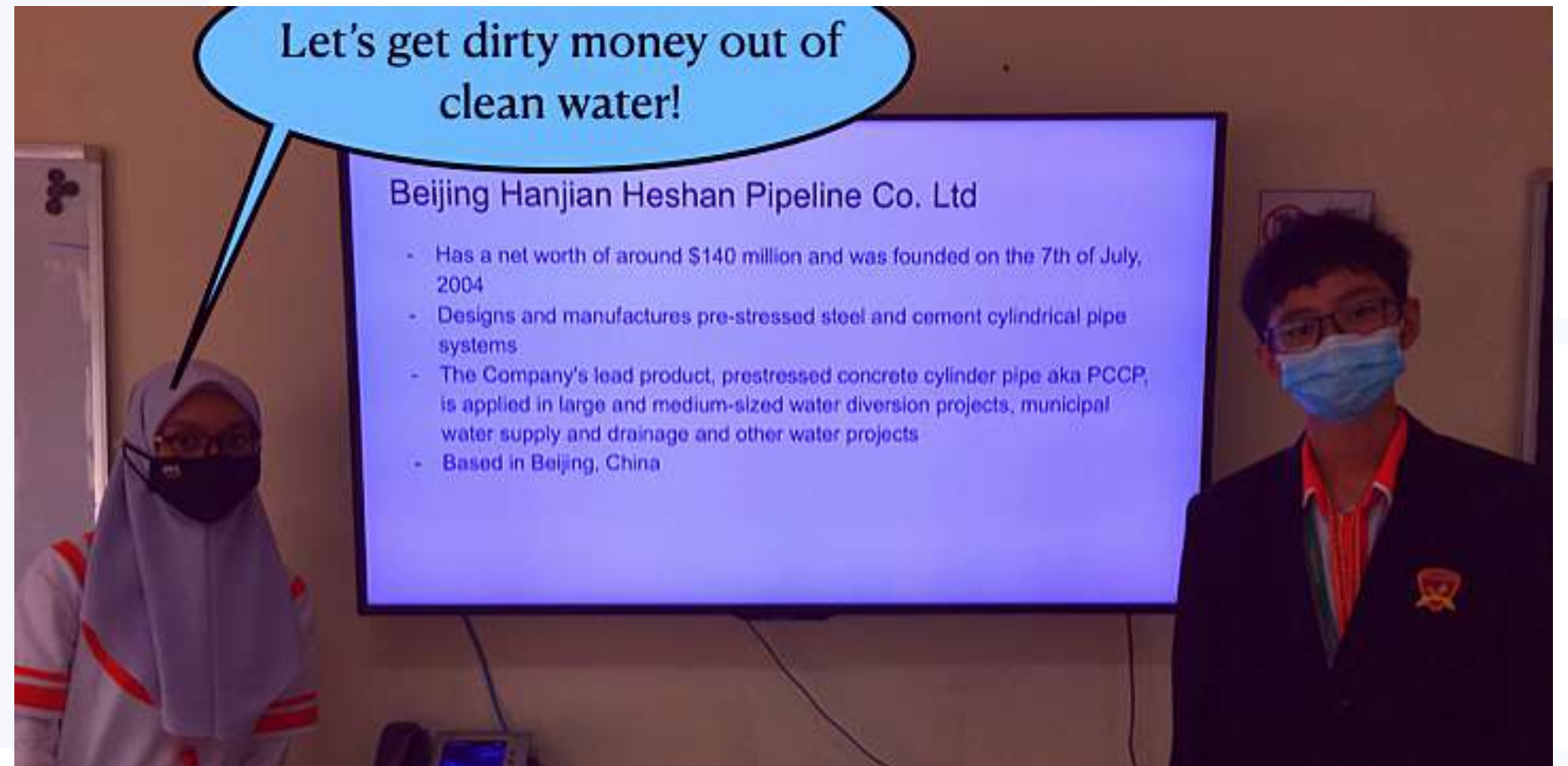
Sensational Science



Rigorous Research

This week the students delved into the issue of vested interests within international organisations. Upon thorough investigation, the students found that over twenty percent of organisation members within the World Water Forum have direct or indirect links with the privatisation and ownership of water. To conclude the weekly topic, students presented their research findings to the class.

Great job Year 10!



Chemical Investigation

Year 11



Aim of the experiment:
To identify the unknown samples based on their chemical properties

Junior 1

$$\text{scorpion} + 4 = 6$$

$$+ \quad +$$

$$\text{scorpion} + \text{whale} = 13$$

$$= \quad =$$

$$10 \quad 9$$

$$\text{scorpion} \times \text{scorpion} + \text{whale} = ?$$

Junior 2

$$\text{ant} + \text{spider} = 5$$

$$+ \quad +$$

$$7 + \text{snail} = 12$$

$$= \quad =$$

$$8 \quad 9$$

$$\text{ant} + \text{spider} \times \text{snail} = ?$$

HOW TO PLAY?

Find the value for ? based on the values of the different emojis on the puzzles. You must follow the rules of BODMAS.

WEEKLY MATHS CHALLENGE

Senior 1

$$\text{taxi} + \text{bus} = 26$$

$$\times \quad \times$$

$$10 + \text{ambulance} = 32$$

$$= \quad =$$

$$160 \quad 220$$

$$\text{ambulance} + \text{taxi} + \text{bus} = ?$$

Senior 2

$$14 + \text{tomato} = 18$$

$$\times \quad \times$$

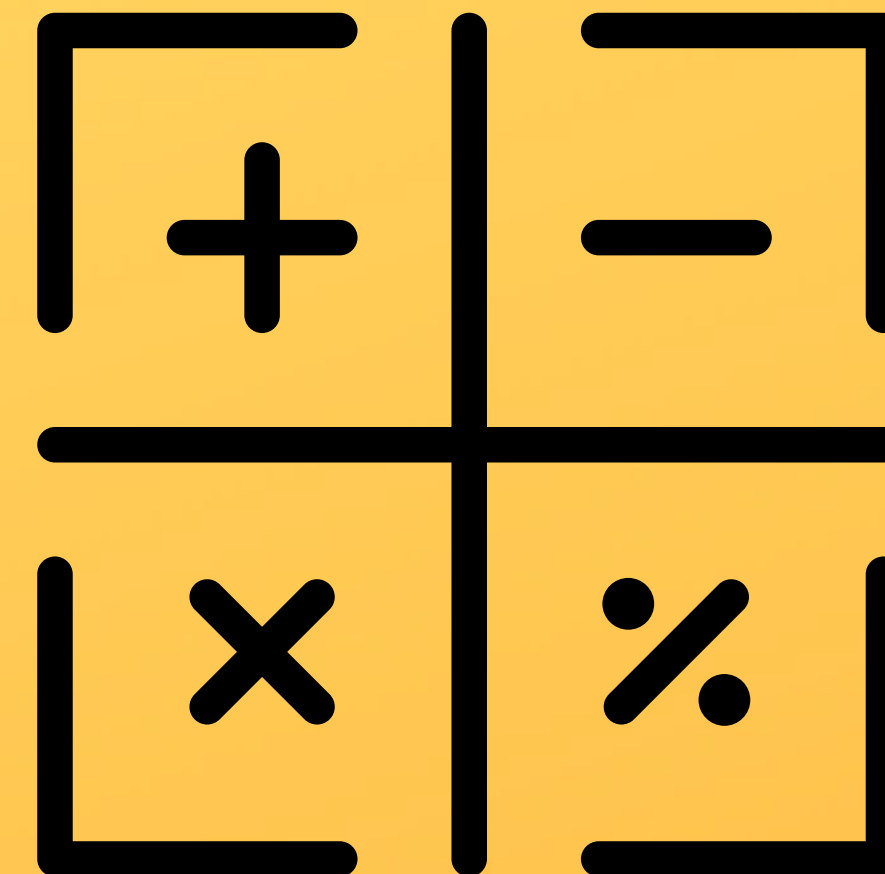
$$\text{pretzel} + \text{eggplant} = 52$$

$$= \quad =$$

$$392 \quad 96$$

$$\text{tomato} \times \text{eggplant} + \text{pretzel} = ?$$

[Answer for weekly challenge will be revealed next week]



**Answers will
appear next
week**

Answers to the last challenge

Well done to

Deevveyeash

Santhara Rao, Y5
and **Annabelle Lee**

Syin Yee, Y6, who

successfully answered the challenges and earns academic merit points!

Junior 1

$$7 + 4 = 11$$

$$+ + =$$

$$1 + 8 = 9$$

$$= =$$

$$8 \quad 12$$

$$14 + 8 \times 2 = 30$$

Junior 2

$$5 + 2 = 7$$

$$+ + =$$

$$8 + 7 = 15$$

$$= =$$

$$13 \quad 9$$

$$7 \times 10 + 16 = 86$$

WEEKLY MATHS CHALLENGE

Senior 1

$$16 \times 22 = 352$$

$$+ \times =$$

$$24 + 12 = 36$$

$$= =$$

$$40 \quad 264$$

$$11 + 12 \times 12 = 155$$

Senior 2

$$12 + 5 = 17$$

$$+ \times =$$

$$22 + 28 = 50$$

$$= =$$

$$34 \quad 140$$

$$12 \times 28 + 11 = 347$$

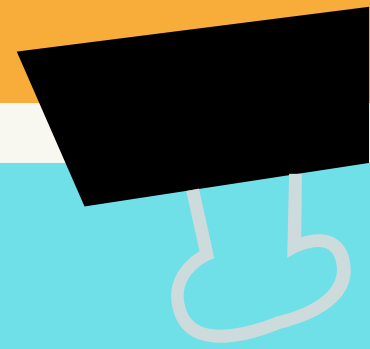
HOW TO PLAY?

Find the value for ? based on the values of the different emojis on the puzzles. You must follow the rules of BODMAS.

[Answer for weekly challenge will be revealed next week]

Words of the Week: *thoughtful words*

For Monday 5th October - Friday 9th October



To improve our knowledge of vocabulary each week we will introduce words for students to try to use in their conversations and in their writing. This week, for Primary and Secondary students our words relate to **thinking**.

Primary word of the week:

Analyse

Meaning: examine and think about something in detail so that you can explain it.

Secondary word of the week:

Pensive

Meaning: engaged in deep thought.

Dates for Your Diary

Monday 5th-Friday 9th October

- Y10 Checkpoint Examination Week

Tuesday 2nd October

- IGCSE Exam Season for Mandarin and Malay continues

Tuesday 6th October

- Primary Coffee Morning

Monday 12th October

- World Mental Health Day Talks

