



**Rafflesia**  
INTERNATIONAL & PRIVATE SCHOOLS

# **Rafflesia International School Puchong**



 **+6019 279 9088** | **[www.ris.edu.my](http://www.ris.edu.my)**

 **[rafflesiainternationalschools](https://www.facebook.com/rafflesiainternationalschools)** | **[admissions@rafflesia.edu.my](mailto:admissions@rafflesia.edu.my)**

**TRADITIONAL VALUES • GLOBAL VISION**





**Rafflesia**  
INTERNATIONAL & PRIVATE SCHOOLS

*Your future begins*  
**at Rafflesia International School Puchong**

## Quality You Can Trust

Quality Education With Committed Teachers  
and Better Learning Environment



**CAMBRIDGE**  
International Education

*Your School of Choice!*





**Rafflesia**  
INTERNATIONAL & PRIVATE SCHOOLS

# RAFFLESIA INTERNATIONAL SCHOOL PUCHONG

**A Leading IGCSE School**

**TOP QUALITY EDUCATION**  
with **Traditional Values**  
and **Global Vision**



***Our Vision:***  
*To be the School of Choice  
with international recognition*

## **CURRICULUM OFFERED:**

- ✓ **INTERNATIONAL EARLY YEARS CURRICULUM (IEYC)**
- ✓ **INTERNATIONAL PRIMARY CURRICULUM (IPC)**
- ✓ **IGCSE**





# Rafflesia

INTERNATIONAL & PRIVATE SCHOOLS

## *About Us*

Rafflesia Education Group was founded in 2010 by a group of dedicated educationalists, with years of experience in the education industry in Malaysia, with the aim of becoming the school of choice with international recognition.

Rafflesia opens its doors to provide a quality and world-class international education, preparing our young generation for their future.







# Rafflesia

INTERNATIONAL & PRIVATE SCHOOLS

## *About Us*

Rafflesia is a 'new generation' international school, not just boasting its state-of-the-art, cutting edge, and eco-friendly facilities to support a progressive teaching and learning environment, but also delivering an internationally-minded curriculum. Taught by highly qualified and experienced international educators from overseas and Malaysia, the programmes of study offered are designed to serve the needs of the next generation of global thinkers, shapers and leaders.

With the philosophy of providing a holistic and yet individualised education for each learner, Rafflesia prepares its students to realise their full potential within a stimulating and challenging international learning community.

Emphasising on the group's vision and mission, Rafflesia aspires to appreciate cultural diversity and a willingness to embrace social and personal responsibility.







# Rafflesia

INTERNATIONAL & PRIVATE SCHOOLS

## VISION

To be the **School of Choice** with international recognition

## MISSION

Nurturing **Talents** for the future





# WHY

**RAFFLESIA  
INTERNATIONAL  
SCHOOL  
PUCHONG?**







**Rafflesia**  
INTERNATIONAL & PRIVATE SCHOOLS

# Our Curriculum

Rafflesia International School offers a coherent, inclusive curriculum for progression of students aged between 3-18 years old. This curriculum encompasses the International Early Years Curriculum (IEYC), International Primary Curriculum (IPC) and the Cambridge Curriculum



**CAMBRIDGE**  
International Education

## IEYC

International Early Years Curriculum



## EARLY YEARS

Nursery & Reception  
(AGE 3 TO 5)

At Rafflesia, we believe that each child is unique in the way that they grow and develop. Our curriculum, which is child-centred and activity-based, is specially designed for individual differences in ability and interest.



1

### INDEPENDENCE & INTERDEPENDENCE

**Focuses on developing personal, social and emotional development**

**This strand links to:**

- The IEYC Personal Goals
- The IEYC International Dimension

2

### COMMUNICATING

**Focuses on communicating through:**

- Speaking & listening
- Reading
- Writing
- Number
- Shapes & Measures
- ICT & Computing
- Expressive Arts & Creativity

3

**Focuses on developing the skills of enquiry through exploring:**

- People
- The world

### ENQUIRING

4

**Focuses on developing a positive attitude to:**

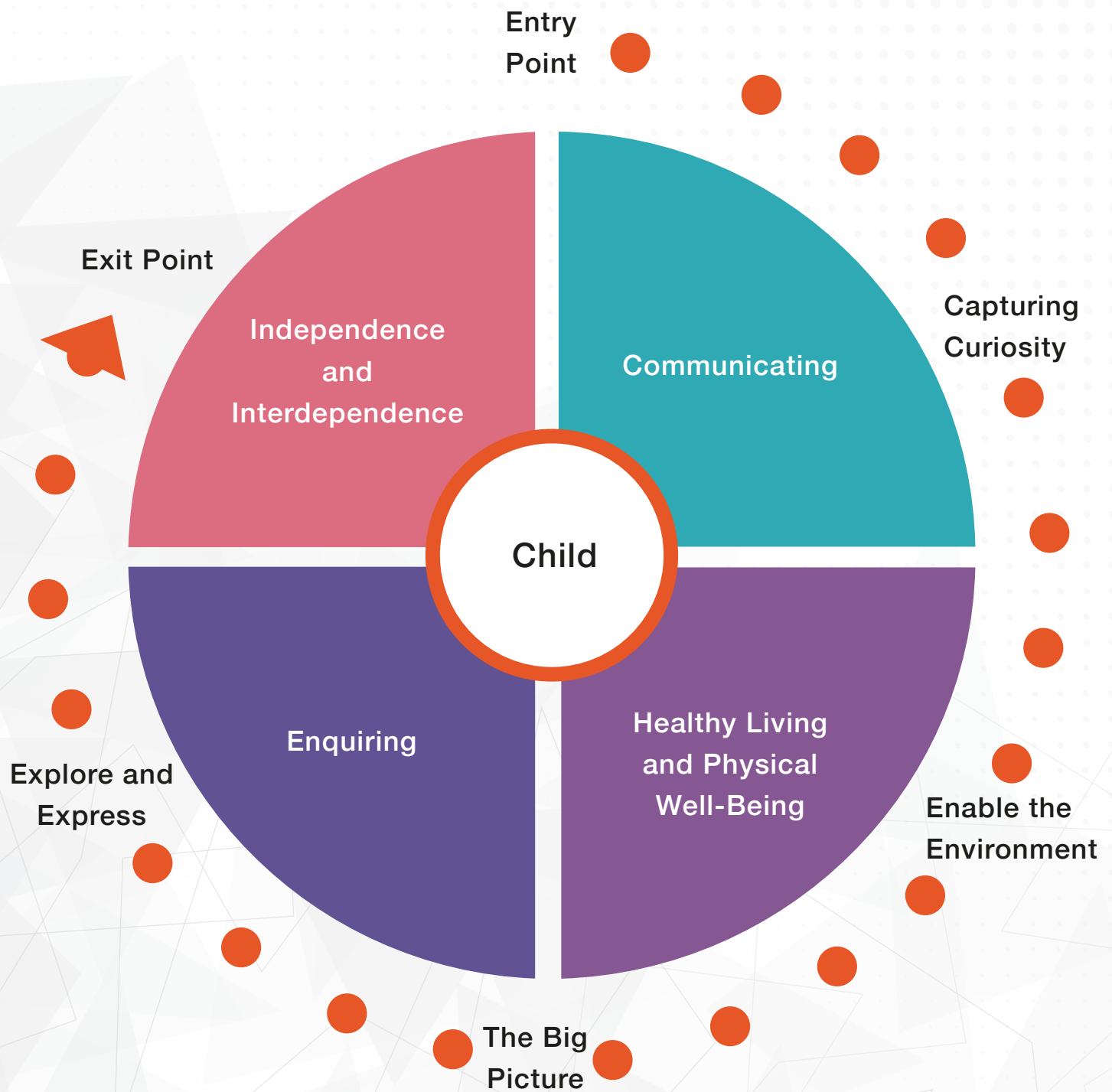
- Health
- Self care
- Physical activity

### HEALTHY LIVING & PHYSICAL WELL-BEING





# IEYC Learning Process



# IPC

## International Primary Curriculum

### YEAR 1-YEAR 6



Our primary studies intertwine thematic and subject-based learning with International mindedness and development of personal learning goals. The IPC Programme prepares the students for smoother progression into secondary studies

Thematic

International  
mindedness

Creative  
and  
Challenging

Global themes,  
local heritage

**WHY  
IPC?**

Assessment  
for  
learning

Brain-friendly

Skills  
Focused

Personal  
Development



**Ages 5-6**

**Milepost 1**

**Ages 7-8**

**Milepost 2**

**Ages 9-10**

**Milepost 3**

## What are the Goals of IPC?

### Subject Goals

#### Learning Goals

Cover the knowledge, skills and understanding of children relating to the subjects they are learning.

#### Subjects

- Science
- History
- Geography
- Technology & Innovation
- Art
- Music
- ICT
- International
- Health & Well-being
- Language Art
- Mathematics

### Personal Goals

These underpin the individual qualities and dispositions that the children need essential in the 21st century.

**8**

#### IPC Personal Goals

- Adaptable
- Respectful
- Empathetic
- Collaborator
- Thinker
- Resilient
- Ethical
- Communicator

### International Learning Goals

These learning goals are unique and can help young children to develop international mindsets and intercultural perspectives.

## How do they Learn?

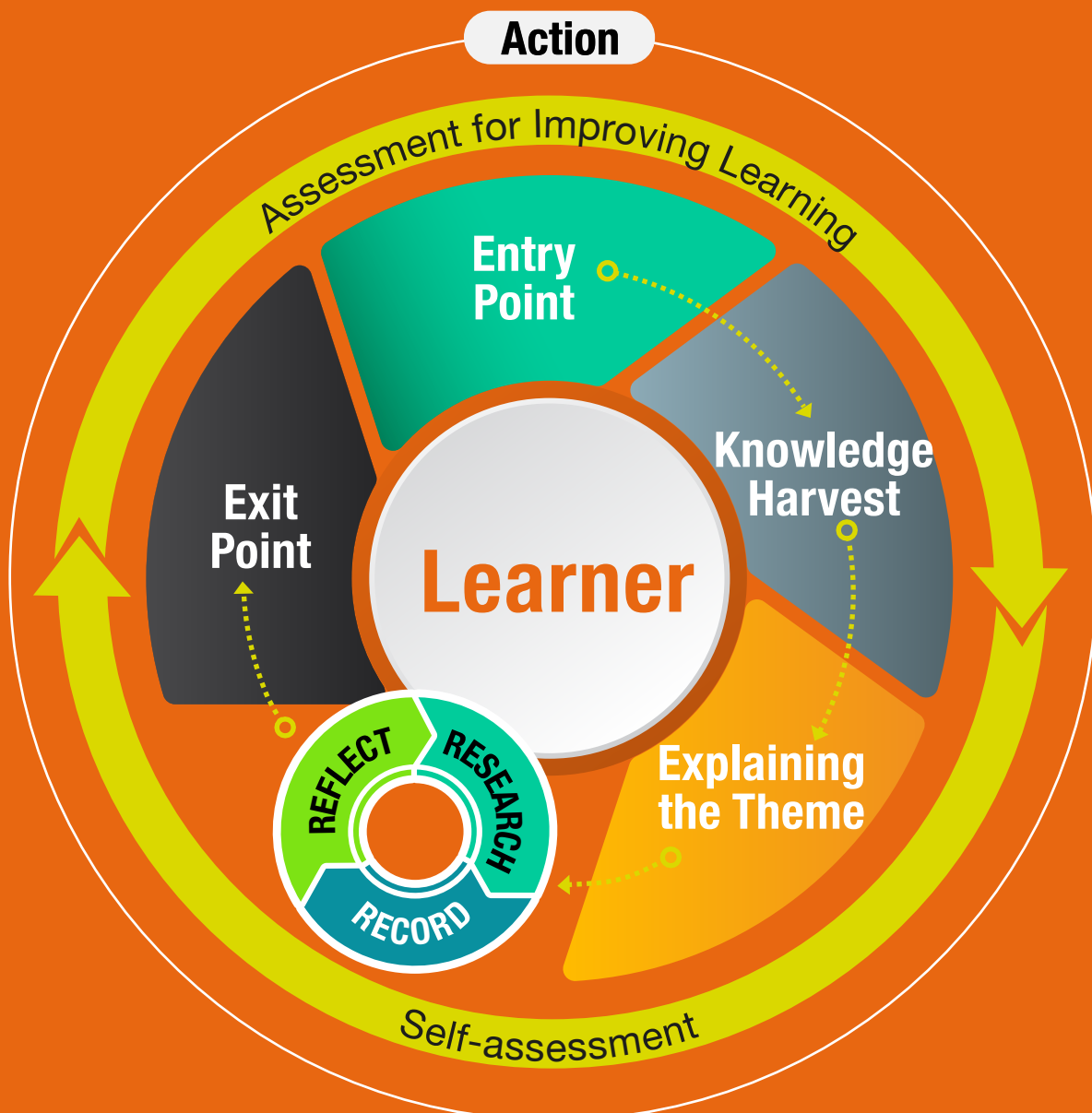


Children learn through a series of IPC units of work which are stimulating with rigorous activities. IPC allows children to make connections in learning across subjects.

The IPC has been designed for children of all abilities and all learning styles, and encourages learning in groups as well as individual learning. It places emphasis on children doing research and recording of their learning.



## IPC Learning Process





# Cambridge Lower Secondary Year 7 - Year 9 (Age 11 to 14)

Shaped by the Cambridge Curriculum, the Cambridge Lower Secondary programme is structured to strengthen and diversify every students' fundamental skills.

Rafflesia students are challenged to discover and achieve their potential while concurrently being assessed by Cambridge Checkpoint examinations. This component evaluates a student's mastery of English, Mathematics and Science, and identifies core strengths to build on. It also provides parents with valuable information so they can assist their child in choosing the right IGCSE subjects to work towards.



## CAMBRIDGE

International Education

# IGCSE Year 10 - Year 11 (Age 14 to 16)

Rafflesia students progressing from Cambridge Lower Secondary will further develop a deeper understanding of the subjects, while continuously improving their skills. This prepares them for the IGCSE Examinations.

Under the IGCSE programme, the students will study a mixture of core, compulsory and optional subjects, i.e. English, Mathematics and Sciences are offered as well as a wide range of elective subjects including Business, Humanities, Social Sciences and Languages.

As 21st century learners, Rafflesia students will be equipped with a creative mindset, problem-solving skills and endless curiosity for knowledge, giving them the springboard they require to thrive and succeed in their future endeavours.





**Rafflesia**  
INTERNATIONAL & PRIVATE SCHOOLS

# IGCSE

Outstanding Achievement  
of Year 2024/25

**9A\*/A**



LIM  
ZHE YU

LEE JIA BAO  
BERNICE

LAU  
JUN BOND

LEE JIA BEI  
BRENDA

LIM  
WEI TONG



WEE  
YU XIANG

TEOH  
ZHUO XUN

SAMITHA D/O  
THAVANAYAGAM

THOO  
QI ZHENG

*Congratulations!*

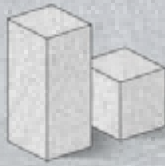
TRADITIONAL VALUES • GLOBAL VISION







**Rafflesia**  
INTERNATIONAL & PRIVATE SCHOOLS



**We are proud to introduce**

**NEW**

# AI AND ROBOTICS

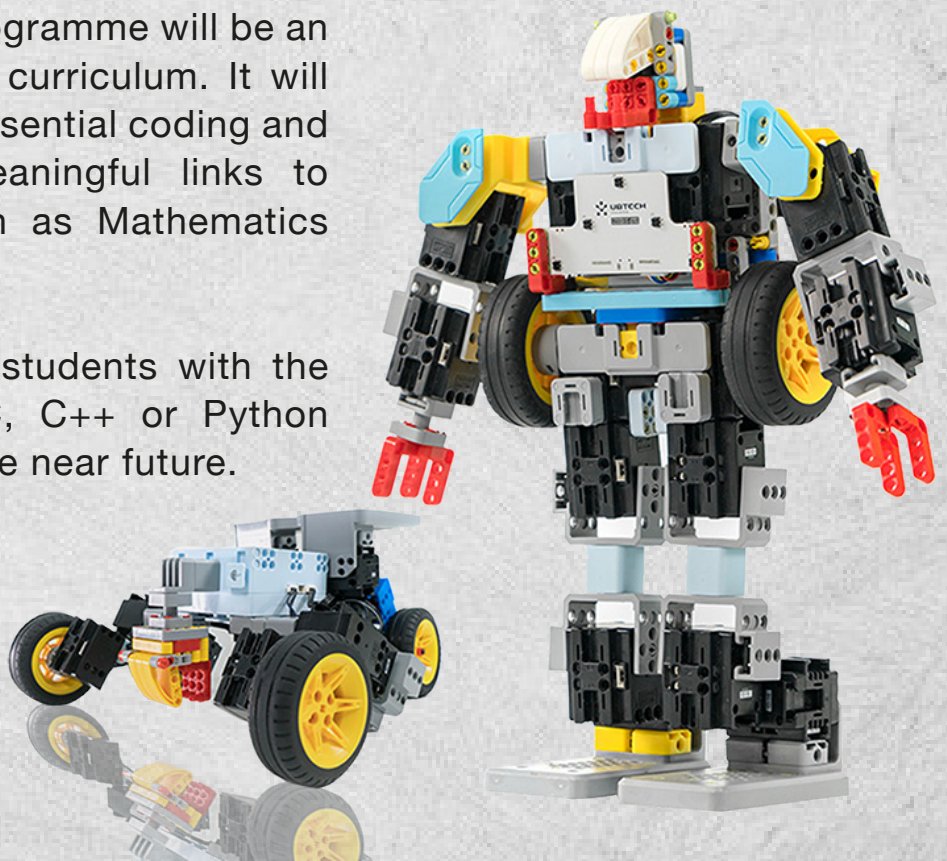
**EDUCATION PROGRAMME**

## Artificial Intelligence (AI) Courses

### BRINGING AI TO LIFE

The carefully structured AI programme will be an important part of the school curriculum. It will enable students to develop essential coding and programming skills with meaningful links to learning other subjects such as Mathematics and Science.

This program will equip the students with the programming language of C, C++ or Python which is commonly used in the near future.







**Rafflesia**  
INTERNATIONAL & PRIVATE SCHOOLS

# Jobs of the Future

**Rafflesia**  
INTERNATIONAL & PRIVATE SCHOOLS

**Rafflesia**  
PRIVATE SCHOOLS

**Let's nurture  
artificial  
intelligence  
talents  
together !**



**ARTIFICIAL  
INTELLIGENCE**

**OPENS A WORLD OF OPPORTUNITIES**



# Pathway to Success

UNIVERSITIES WORLDWIDE

CAMBRIDGE  
A-LEVEL

IB  
DIPLOMA

FOUNDATION

IGCSE (Years 10-11)



CAMBRIDGE SECONDARY 1  
(Years 7-9)

Cambridge  
Secondary 1

PRIMARY  
(Years 1-6)



EARLY YEARS



RAFFLESIA  
INTERNATIONAL  
SCHOOL

# Co-Curricular Activities (CCA)

Co-Curricular activities are important to help build and form the social dispositions of the students. This is an opportunity for them to further enhance their hidden potentials and talents. We also believe these activities will help students strike a balance between academic excellence and their social responsibilities in line with our holistic education.

## Primary

### 2025/26 Co-Curricular Activities\*

Monday	Wednesday	Friday
Badminton (Coach led)	Creative Art	Maths Wizard Club
Football (Coach led)	Performing Arts (Y4 - Y6)	Beautiful Creation Club
Lego Robotics (Coach led)	Origami Club	Heritage of the World
Taekwondo (Coach led)	Green Guardians	Broadcasting
Street Drum (Coach led)	Let's Dance Club	The Little Scientists
	Chinese Cultural Club (Combined)	Fun Book Club



## Secondary

### 2025/26 Co-Curricular Activities\*

Monday	Wednesday	Friday
Digital Media	Cooking & Baking Club (Y10 - Y11)	Badminton (Coach led)
Editorial & Broadcasting	Origami Club	Fencing (Coach led)
Green Guardians	Performing Arts	Taekwondo (Coach led)
Sports Club (S)	STEAM	24 Season Drums (Coach led)
	Young Entrepreneur Club	Table Tennis (Coach led)
	Chinese Cultural Club (Combined)	Basketball (Coach led)
		Archery (Coach led)



\*Subject to availability and on a first come, first served basis.

\*The asterisk CCAs (\*) are professional coach-led CCAs. An extra fee has to be paid yearly.



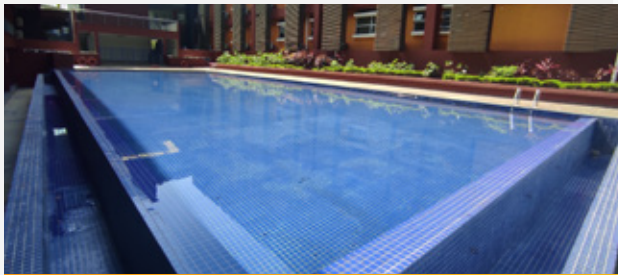
# School Facilities



Classroom



Library



Swimming Pool



ICT Lab



Basketball Court



Lecture Hall



Art Room



# School Facilities



Science Lab



Music Room



Multi-purpose Hall



Cafeteria

# Fee Schedule

## Rafflesia International School Puchong Fee Schedule for Academic Year 2025/2026

<b>Application Fee</b>		RM 1,000	
<b>Registration Fee</b>		RM 3,000	
Stage	Year Group	Tuition Fee Per Term (RM)	Deposit (RM)
Early Years	Nursery	5,411	5,411
	Reception	5,411	5,411
Primary	Year 1	7,800	7,800
	Year 2	7,800	7,800
	Year 3	11,655	11,655
	Year 4	11,655	11,655
	Year 5	11,655	11,655
	Year 6	11,655	11,655
Secondary	Year 7	14,805	14,805
	Year 8	14,805	14,805
	Year 9	14,805	14,805
	Year 10	16,600	16,600
	Year 11	16,600	16,600

### Important Notes:

1. Application Fee: Payable upon submission of an Application form. This fee is not refundable nor transferable.
2. Registration Fee: Payable upon receipt of the letter of Offer. This fee is a one-off payment, not refundable nor transferable.
3. The deposit is to be topped up as the student progresses according to the year level. It is non-transferable but refundable, provided that one **FULL** term's written notice of withdrawal in advance is submitted to the school.
4. All fees must be paid before the commencement of the academic year. These fees are not refundable nor transferable and they cannot be prorated.
5. Tuition Fees are payable termly, there are three (3) terms in an academic year.
6. Tuition Fees are invoiced termly. These fees are payable on or before end of current term.
7. Meal plan, uniform, books (text books, e-books, workbooks & exercise books), educational digital apps, resources fee, co-curricular activities, overseas/outstation trip, educational trip and insurance will be billed separately.
8. All external exam fees are borne by students.
9. All fees are subjected to review and the management reserves the right to revise the terms and conditions.



# Payment methods and banking details

Payment can be made by either one of the following methods: Cash / Crossed cheque / Bank draft / Online / Telegraphic Transfer.

<b>CHEQUES PAYABLE TO</b>	Rafflesia School (Puchong) Sdn Bhd
<b>BANK TRANSFER</b>	For payment made Online or via Telegraphic Transfer, please use the following bank details
<b>ACCOUNT NUMBER</b>	23000010293
<b>BANK NAME</b>	Hong Leong Bank Berhad
<b>SWIFT CODE</b>	HLBBMYKL
<b>CONTACT DETAILS</b>	<p>Rafflesia International School Puchong Persiaran Sierra 2, Bandar 16 Sierra, 47100 Puchong, Selangor, Malaysia.</p> <p>Tel: +603 8953 9088 Handphone: 019 279 9088 W: <a href="http://www.ris.edu.my">www.ris.edu.my</a> E: <a href="mailto:admissions@rafflesia.edu.my">admissions@rafflesia.edu.my</a></p>

**Note:**

Please forward a copy of the transaction report to the School's Finance Office via email [finance@rafflesia.edu.my](mailto:finance@rafflesia.edu.my) stating name of student and year group.

The information presented in this brochure is accurate at time of publishing and subject to change without prior notice.

# WHERE ARE WE?



## PUCHONG CAMPUS

Persiaran Sierra 2, Bandar 16 Sierra,  
47100 Puchong, Selangor, Malaysia.



+603 8953 9088



admissions@rafflesia.edu.my



+6019 279 9088

### FOLLOW US!



rafflesiainternationalschools



rafflesiaschools



Rafflesia International & Private Schools



[www.ris.edu.my](http://www.ris.edu.my)